

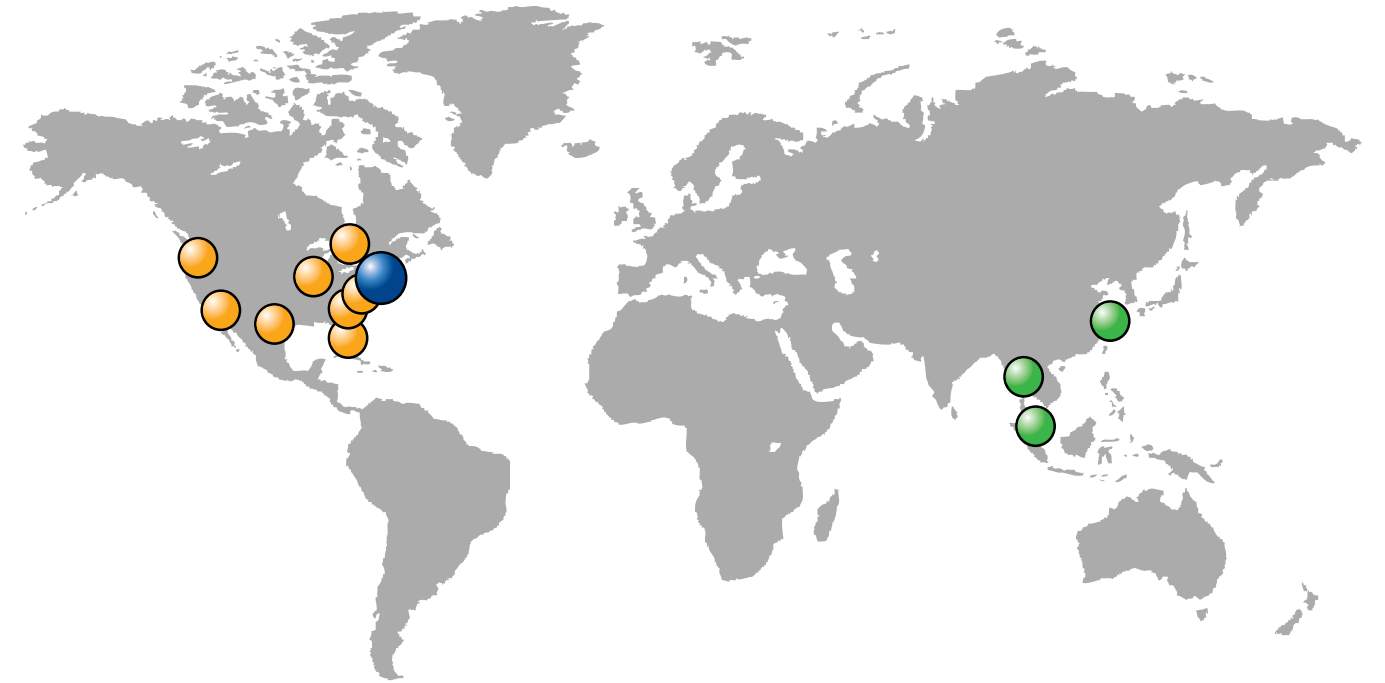


THE SAFETY ZONE®

For over 40 years, The Safety Zone has been partnering with our clients to ensure their successes. Our experience supplying the industrial safety, janitorial, food service, food processing and medical markets extends worldwide. We'll customize our services to fit your objectives, adding valued insight that, in combination with our comprehensive selection of superior PPE products, will enhance your sales. From a one case order to a full container or truckload, we have the ability to meet and exceed all of your PPE needs.




SAFETY ZONE LOCATIONS



 **WORLDWIDE HEADQUARTERS**
Guilford, CT

 **NORTH AMERICAN DISTRIBUTION CENTERS**
Richmond, IN
Cerritos, CA
Houston, TX
Pompano Beach, FL
Kent, WA
Thomasville, NC
Secaucus, NJ
Fergus, ON Canada

 **INTERNATIONAL LOCATIONS**
China
Malaysia
Thailand



LATEX GLOVES

 COLOR OPTIONS

GRDR-(SIZE)-1-T	4.5 MIL, Powdered Latex, 100/BX 10BX/CS SM-XL
GRPR-(SIZE)-1-T	5.0 MIL, Powder Free Latex, 100/BX 10BX/CS SM-2X
GRDL-(SIZE)-1	4.5 MIL, Blue Powdered Latex, 100/BX 10BX/CS, SM-XL
GRPL-(SIZE)-1	4.5 MIL, Blue Powder Free Latex, 100/BX 10BX/CS, SM-XL
GRPR-(SIZE)-1-T8	8.0 MIL, Powder Free Latex, Double Chlorinated, 100/BX 10BX/CS, SM-XL
GRHL-(SIZE)-5M-P	13.0 MIL, 12" Blue Powder Free Latex, Double Chlorinated, 50/BX 10BX/CS, SM-2X
GRHP-(SIZE)-5M	13.0 MIL, 12" Powder Free Latex, 50/BX 10BX/CS, SM-XL
MEDICAL GRADE	
GREP-(SIZE)-1	4.5 MIL, Powder Free Latex, Examination, 100/BX 10BX/CS SM-XL
GREP-(SIZE)-1T	5.5 MIL, Premium Powder Free Polymer Coated Latex, Examination, 100/BX 10BX/CS, SM-XL
GREH-(SIZE)-5M	10.0 MIL, 12" High Risk Polymer Coated Powder Free Latex, Examination, 50/BX 10BX/CS, SM-XL
GREL-(SIZE)-5M-P	13.0 MIL, 12" Blue High Risk Powder Free Latex, Examination, 50/BX 10BX/CS, SM-2X

ALL SAFETY ZONE GLOVES COMPLY WITH THE FFDCA FOR FOOD CONTACT AND ARE DEHP FREE

NATURAL LATEX



BLUE LATEX



HEAVY DUTY LATEX



NITRILE GLOVES

 COLOR OPTIONS

GNPR-(SIZE)-1A	3.0 MIL, Blue Powder Free Nitrile, 100/BX 10BX/CS, SM-XL
GNPR-(SIZE)-2	3.0 MIL, Blue Powder Free Nitrile, 200/BX 10BX/CS, SM-2X
GNPR-(SIZE)-BK	3.3 MIL, Black Powder Free Nitrile, 100/BX 10BX/CS, SM-XL
GNPR-(SIZE)-1E	3.5 MIL, Blue Powder Free Nitrile, 100/BX 10BX/CS, SM-XL
GNPR-(SIZE)-1M	3.7 MIL, Blue Powder Free Nitrile, 100/BX 10BX/CS, SM-2X
GNPR-(SIZE)-GR	3.7 MIL, Green Powder Free Nitrile, 100/BX 10BX/CS, SM-2X
GNPR-(SIZE)-OR	3.7 MIL, Orange Powder Free Nitrile, 100/BX 10BX/CS, SM-2X
GNPR-(SIZE)-1-K	5.3 MIL, Black Powder Free Nitrile, 100/BX 10BX/CS, SM-2X
GNPR-(SIZE)-1M-SZR	3.0 MIL, Indigo Powder Free Nitrile, 100/BX 10BX/CS, SM-2X
GNPR-(SIZE)-1	6.0 MIL, Blue Powder Free Nitrile, 100/BX 10BX/CS, SM-2X
GNPL-(SIZE)-5-T8	8.3 MIL, 12" Blue Powder Free Nitrile, 50/BX 10BX/CS, SM-2X
GNDR-(SIZE)-1M	3.7 MIL, Blue Powdered Nitrile, 100/BX 10BX/CS, SM-XL
GNDR-(SIZE)-1	6.0 MIL, Blue Powdered Nitrile, 100/BX 10BX/CS, SM-XL
MEDICAL GRADE	
GNEP-(SIZE)-1E	2.7 MIL, Blue Powder Free Nitrile, Examination, 100/BX 10BX/CS, SM-XL
GNEP-(SIZE)-1	4.3 MIL, Blue Powder Free Nitrile, Examination, 100/BX 10BX/CS, SM-XL
GNEP-(SIZE)-K	4.3 MIL, Black Powder Free Nitrile, Examination, 100/BX 10BX/CS, SM-XL
GNEP-(SIZE)-1P	3.0 MIL, Indigo Powder Free Nitrile, Examination, 100/BX 10BX/CS, SM-XL
GNEP-(SIZE)-5-T8	8.3 MIL, 12" Blue Powder Free Nitrile, Examination, 50/BX 10BX/CS, SM-2X

ALL SAFETY ZONE GLOVES COMPLY WITH THE FFDCA FOR FOOD CONTACT AND ARE DEHP FREE

BLACK NITRILE ORANGE NITRILE INDIGO NITRILE GREEN NITRILE BLUE NITRILE



VINYL

GLOVES

COLOR OPTIONS

GVDR-(SIZE)-HH	Clear Economy Powdered Vinyl, 100/BX 10BX/CS, SM-XL
GVDR-(SIZE)-1	Clear Standard Powdered Vinyl, 100/BX 10BX/CS, SM-XL
GVDR-(SIZE)-1C	Clear Premium Powdered Vinyl, 100/BX 10BX/CS, SM-2X
GVP9-(SIZE)-HH	Clear Economy Powder Free Vinyl, 100/BX 10BX/CS, SM-XL
GVP9-(SIZE)-1	Clear Standard Powder Free Vinyl, 100/BX 10BX/CS, SM-XL
GVP9-(SIZE)-1C	Clear Premium Powder Free Vinyl, 100/BX 10BX/CS, SM-2X
GVPL-(SIZE)-1C	12" Clear Premium Powder Free Vinyl, 100/BAG 10BAG/CS, MD-LG
GVP9-(SIZE)-1-BL	Blue Standard Powder Free Vinyl, 100/BX 10BX/CS, SM-2X
GVP9-(SIZE)-1C-BL	Blue Premium Powder Free Vinyl, 100/BX 10BX/CS, SM-2X
GVP9-(SIZE)-1-BL-MT	Blue Metal Detectable Premium Powder Free Vinyl, 100/BX 10BX/CS, SM-XL
GVDL-(SIZE)-1	Blue Standard Powdered Vinyl, 100/BX 10BX/CS, SM-XL
GVDL-(SIZE)-1C	Blue Premium Powdered Vinyl, 100/BX 10BX/CS, SM-XL
GVNP-(SIZE)-1	Blue Premium Powder Free Vinyl/Nitrile Blend, 100/BX 10BX/CS, SM-2X

ALL SAFETY ZONE GLOVES COMPLY WITH THE FFDCA FOR FOOD CONTACT AND ARE DEHP FREE

CLEAR VINYL BLUE VINYL SYNTHETIC VINYL/NITRILE BLEND



GVDR-(SIZE)-1C-SY	Synthetic Standard Powdered Vinyl, 100/BX 10BX/CS, SM-XL
GVP9-(SIZE)-1-SY	Synthetic Standard Powder Free Vinyl, 100/BX 10BX/CS, SM-XL
GVP9-(SIZE)-1C-SY	Synthetic Premium Powder Free Vinyl, 100/BX 10BX/CS, SM-2X
GVP3-(SIZE)-1C	Synthetic Premium "Super Stretch" Powder Free Vinyl, 100/BX 10BX/CS, SM-XL
GVP9-(SIZE)-1-SYBL	Blue Synthetic Standard Powder Free Vinyl, 100/BX 10BX/CS, SM-XL
GVP9-(SIZE)-1C-K	Black Powder Free Vinyl, 100/BX 10BX/CS, SM-XL
GVDG-(SIZE)-400C	6.0 MIL, Green Premium Powdered Vinyl, 100/BX 4BX/CS, SM-2X
GVDG-(SIZE)-1200C	6.0 MIL, Green Premium Powdered Vinyl, 300/BX 4BX/CS, SM-2X
GVP9-(SIZE)-1-GR	Green Standard Powder Free Vinyl, 100/BX 10BX/CS, SM-2X
GVP9-(SIZE)-1C-GR	Green Premium Powder Free Vinyl, 100/BX 10BX/CS, SM-XL
GVP9-(SIZE)-1RD	Red Standard Powder Free Vinyl, 100/BX 10BX/CS, SM-XL
GVP9-(SIZE)-1YE	Yellow Standard Powder Free Vinyl, 100/BX 10BX/CS, SM-XL
GVP9-(SIZE)-1WH	White Standard Powder Free Vinyl, 100/BX 10BX/CS, SM-2X

MEDICAL GRADE

GVEP-(SIZE)-1C	Clear Premium Powder Free Vinyl, Examination, 100/BX 10BX/CS, SM-XL
GVEP-(SIZE)-1C-SY	Synthetic Premium Powder Free Vinyl, Examination, 100/BX 10BX/CS, SM-XL

ALL SAFETY ZONE GLOVES COMPLY WITH THE FFDCA FOR FOOD CONTACT AND ARE DEHP FREE

BLACK VINYL GREEN VINYL RED VINYL YELLOW VINYL WHITE VINYL



CHEMICAL & PROCESSING GLOVES


 COLOR OPTIONS

GRFY-(SIZE)-2E	12 MIL, Yellow Flock Lined Latex, One Pair Per Bag, 12DZ/CS, SM-XL
GRFY-(SIZE)-1B	16 MIL, Yellow Flock Lined Latex, Bulk Packed Twelve Pair Per Bag, 10DZ/CS, SM-XL
GRFY-(SIZE)-1C	16 MIL, Yellow Flock Lined Latex, One Pair Per Bag, 10DZ/CS, SM-2X
GRFY-(SIZE)-1S	18 MIL, Yellow Flock Lined Latex, One Pair Per Bag, 10DZ/CS, SM-XL
GRFY-(SIZE)-2T-R/C	20 MIL, Yellow Flock Lined Latex, Chlorinated, One Pair Per Bag, 12DZ/CS, SM-XL
GRFY-(SIZE)-4CR	16 MIL, Yellow Retail Packed Flock Lined Latex, One Pair Per Bag, 4DZ/CS, SM-XL
GRFL-(SIZE)-1S	18 MIL, Blue Flock Lined Latex, One Pair Per Bag, 10DZ/CS, SM-XL
GRFL-(SIZE)-2T-R/C	20 MIL, Blue Flock Lined Latex, Chlorinated, One Pair Per Bag, 12DZ/CS, SM-XL
GRFL-(SIZE)-1C	16 MIL, Purple Flock Lined Latex, One Pair Per Bag, 10DZ/CS, SM-XL
GRLY-(SIZE)-1SF	28 MIL, Blue Flock Lined Neoprene Over Yellow Latex, One Pair Per Bag, 10DZ/CS, SM-XL
GRFO-(SIZE)-1SF	28 MIL, Orange Flock Lined Neoprene Latex Blend, One Pair Per Bag, 10DZ/CS, SM-XL

GNGF-(SIZE)-15C	15 MIL, Standard Green Flock Lined Nitrile, One Pair Per Bag, 12DZ/CS, SM-2X
GNGF-(SIZE)-15	15 MIL, Premium Green Flock Lined Nitrile, One Pair Per Bag, 12DZ/CS, SM-2X
GNGU-(SIZE)-11C	11 MIL, Standard Green Nitrile Unlined, One Pair Per Bag, 12DZ/CS, SM-XL
GNGU-(SIZE)-11	11 MIL, Premium Green Nitrile Unlined, One Pair Per Bag, 12DZ/CS, SM-2X
GNGU-(SIZE)-22-18	22 MIL, 18" Green Unlined Nitrile, One Pair Per Bag, 3DZ/CS, MD-2X
GRCA-(SIZE)-1SF	18 MIL, Amber Unlined Canner Latex, Chlorinated, One Pair Per Bag, 10DZ/CS, XS-XL
GRCA-(SIZE)-1B	16 MIL, Amber Unlined Canner Latex, Chlorinated, Bulk Packed, 10DZ/CS,
GRCL-(SIZE)-1SF	18 MIL, Blue Unlined Latex Canner, Chlorinated, One Pair Per Bag, 10DZ/CS, SM-XL
GRBU-(SIZE)-6T	40 MIL, 16" Black Heavy Duty Latex Pot Scrubber, One Pair Per Bag, 6DZ/CS, LG-XL
GRFB-(SIZE)-1S	28 MIL, Black Flock Lined Neoprene Latex Blend, One Pair Per Bag, 10DZ/CS, SM-XL

ALL SAFETY ZONE GLOVES COMPLY WITH THE FFDCA FOR FOOD CONTACT AND ARE DEHP FREE

ALL SAFETY ZONE GLOVES COMPLY WITH THE FFDCA FOR FOOD CONTACT AND ARE DEHP FREE



YELLOW FLOCK LINED LATEX

BLUE FLOCK LINED LATEX

PURPLE FLOCK LINED LATEX

BLUE NEOPRENE OVER YELLOW LATEX

ORANGE FLOCK LINED NEOPRENE & LATEX BLEND

GREEN FLOCK LINED & GREEN UNLINED NITRILE

NATURAL LATEX CANNERS

BLUE LATEX CANNERS

BLACK LATEX POT SCRUBBER



POLY GLOVES

SHOE & BOOT COVERS

GDPE-(SIZE)-E	Clear High Density Polyethylene Glove, 100/BX 10BX/Carton 10Cartons/CS (10,000/Master Case), SM-XL
GDPE-(SIZE)	Clear High Density Polyethylene Glove, 100/BX 10BX/Carton 10Cartons/CS (10,000/Master Case), SM-XL
GDPE-(SIZE)-5	Clear High Density Polyethylene Glove, 500/BX 2BX/Carton 10Cartons/CS (10,000/Master Case), SM-XL
GDPE-(SIZE)-4-500	Clear High Density Polyethylene Glove, 500/BX 4BX/CS (2,000/Master Case), SM-XL
GDPL-(SIZE)	Clear Low Density Polyethylene Glove, 100/BX 10BX/Carton 10Cartons/CS (10,000/Master Case), SM-XL
GDPL-(SIZE)-5	Clear Low Density Polyethylene Glove, 500/BX 2BX/Carton 10Cartons/CS (10,000/Master Case), SM-XL
GDCP-(SIZE)	Clear Polyethylene/Cast Polyethylene Embossed Glove, 100/BX 10BX/CS, SM-XL
GDSH-(SIZE)	Clear Stretch Hybrid Polyethylene Glove, 100/BX 10BX/CS, SM-XL
GDSH-(SIZE)-BL	Blue Stretch Hybrid Polyethylene Glove, 100/BX 10BX/CS, SM-XL
GDPE-LG-18	18" Clear Polyethylene Glove, 250/BX 10BX/CS, Size Large
GDPE-LG-35	35" Clear Polyethylene Glove, 100/BX 10BX/CS, Size Large

ALL SAFETY ZONE GLOVES COMPLY WITH THE FFDCA FOR FOOD CONTACT AND ARE DEHP FREE



35" CLEAR POLYETHYLENE GLOVE



18" CLEAR POLYETHYLENE GLOVE

CLEAR HIGH DENSITY POLYETHYLENE GLOVE



CAST POLYETHYLENE GLOVE



CLEAR STRETCH HYBRID POLY



BLUE STRETCH HYBRID POLY



DACL-300	Blue Polypropylene Disposable Non-skid Shoe Cover, 300/CS, LG
DACL-300-(SIZE)	Blue Polypropylene Disposable Non-skid Shoe Cover, 300/CS, XL-2X
DACL-300MM	Blue Polypropylene Disposable Non-skid Shoe Cover, Machine Made, 300/CS, LG
DACL-300(SIZE)MM	Blue Polypropylene Disposable Non-skid Shoe Cover, Machine Made, 300/CS, XL-2X
DACL-300-D	Blue Polypropylene Disposable Non-skid Shoe Cover, Dispenser Boxed, 300/CS, LG
DACL-300-XL-D	Blue Polypropylene Disposable Non-skid Shoe Cover, Dispenser Boxed, 300/CS, XL
DACW-300-XL	White Polypropylene Disposable Non-skid Shoe Cover, 300/CS, XL
DACW-2-XL-SMS50	White 50 Gram SMS Polypropylene Disposable Shoe Cover, 200/CS, XL
DAC-CPE-(SIZE)-WH	White Cast Polyethylene "CPE" Embossed Shoe Cover, 300/CS, LG-XL
DAC-CPE-(SIZE)-BL	Blue Cast Polyethylene "CPE" Embossed Shoe Cover, 300/CS, XL-2X
BPD3-XL-5	3 MIL, Clear Polyethylene Boot Cover, 50/BG 10BG/CS, XL
BPD5-(SIZE)-5E	5 MIL, Clear Polyethylene Boot Cover, Elastic Top, 50/BX 10BX/CS, XL-2X
BPD5-XL-5T	5 MIL, Clear Polyethylene Boot Cover, Ties, 50/BX 10BX/CS, XL
BN70-(SIZE)	Yellow Heavy Weight Latex Nuke Boot, Grit Sole, Sold by the Pair, 50/CS, MD-3X

SHOE COVER FIT GUIDE

LARGE - Fits Shoe Sizes 7-10, Fits Boot Sizes 7-9
 XLARGE - Fits Shoe Sizes 9-14, Fits Boot Sizes 10-13
 2X LARGE - Fits Shoe Sizes 15-18, Fits Boot Sizes 14-18

DACL-300-(SIZE)



DACW-300-XL



DAC-CPE-(SIZE)-WH



DAC-CPE-(SIZE)-BL



BPD3-XL-5



BPD5-XL-5E



BPD5-XL-5T



BN70-(SIZE)



GOWNS

SLEEVES



DGIH-2X-WH	White Polypropylene Isolation Gown, Ties, 50/CS, 2X
DGIH-XL-Y	Yellow Polypropylene Isolation Gown, Ties, 50/CS, XL
DGIH-2X-GR	Green Polypropylene Isolation Gown, Ties, 50/CS, 2X
DGIH-2X-BL	Blue Polypropylene Isolation Gown, Ties, 50/CS, 2X

DGIH-2X-WH

DGIH-XL-Y

DGIH-2X-GR

DGIH-2X-BL



DSWP-16-2MM	16" White Machine Made Polyethylene Sleeve, 2,000/CS
DSBP-16-2MM	16" Blue Machine Made Polyethylene Sleeve, 2,000/CS
DSWP-18-1-MM	18" White Machine Made Polyethylene Sleeve, 100/BG 10BG/CS
DSWP-18-1	18" White Polyethylene Sleeve, 100/BG 10BG/CS
DSBP-18-1	18" Blue Polyethylene Sleeve, 100/BG 10BG/CS
DSWP-18-1-CL	18" Clear Polyethylene Sleeve, 100/BG 10BG/CS
DSBV-18	18" Blue Vinyl Sleeve, 6 DZ Pair/CS
DSWV-18	18" White Vinyl Sleeve, 6 DZ Pair/CS
DSPP-18-200	18" White Polypropylene Sleeve, 200/CS
DSPP-18-200-PE	18" White Polyethylene Coated Polypropylene Sleeve, 200/CS
DSWH-18-BB	18" White Breathable Microporous Sleeve, 200/CS
TY-14500-200	18" White Dupont® Tyvek® Sleeve, 200/CS

DSWP-18-1

DSPP-18-200-PE

DSBV-18

DSWP-18-1-CL

DSWV-18

DSBP-18-1

DSPP-18-200

DSWH-18-BB



BOUFFANT CAPS



DBWH-19-1	19" White Bouffant, 100/BG 10BG/CS
DBWH-21-1	21" White Bouffant 100/BG 10BG/CS
DBWH-24-1	24" White Bouffant, 100/BG 10BG/CS
DBWH-28-1	28" White Bouffant, 100/BG 10BG/CS
DBWH-19-1B	19" White Bouffant, 100/BX 10BX/CS
DBWH-21-1B	21" White Bouffant, 100/BX 10BX/CS
DBWH-24-1B	24" White Bouffant, 100/BX 10BX/CS
DBWH-19-5	19" White Bouffant, 100/BG 5BG/CS
DBWH-21-5	21" White Bouffant, 100/BG 5BG/CS
DBWH-24-5	24" White Bouffant, 100/BG 5BG/CS
DBWH-28-5	28" White Bouffant, 100/BG 5BG/CS

DBWH-19-5B	19" White Bouffant, 100/BX 5BX/CS
DBWH-21-5B	21" White Bouffant, 100/BX 5BX/CS
DBWH-24-5B	24" White Bouffant, 100/BX 5BX/CS
DBWH-19-1-PL	19" White Pleated Bouffant, 100/BG 10BG/CS
DBWH-21-1-PL	21" White Pleated Bouffant, 100/BG 10BG/CS
DBWH-24-1-PL	24" White Pleated Bouffant, 100/BG 10BG/CS
DBWH-19-1-LF	19" White 100% Synthetic Bouffant, 100/BG 10BG/CS
DBWH-21-1-LF	21" White 100% Synthetic Bouffant, 100/BG 10BG/CS
DBWH-24-1-LF	24" White 100% Synthetic Bouffant, 100/BG 10BG/CS
DBBL-24-1-LF	24" Blue 100% Synthetic Bouffant, 100/BG 10BG/CS
DBBL-21-1-PL	21" Blue Pleated Bouffant, 100/BG 10BG/CS
DBBL-24-1-PL	24" Blue Pleated Bouffant, 100/BG 10BG/CS

DBBL-19-1	19" Blue Bouffant, 100/BG 10BG/CS
DBBL-21-1	21" Blue Bouffant, 100/BG 10BG/CS
DBBL-24-1	24" Blue Bouffant, 100/BG 10BG/CS
DBBL-21-1B	21" Blue Bouffant, 100/BX 10BX/CS
DBBL-24-1B	24" Blue Bouffant, 100/BX 10BX/CS
DBBL-19-5	19" Blue Bouffant, 100/BG 5BG/CS
DBBL-21-5	21" Blue Bouffant, 100/BG 5BG/CS
DBBL-24-5	24" Blue Bouffant, 100/BG 5BG/CS
DBBL-21-5B	21" Blue Bouffant, 100/BX 5BX/CS
DBBL-24-5B	24" Blue Bouffant, 100/BX 5BX/CS

DBGR-19-1	19" Green Bouffant, 100/BG 10BG/CS
DBGR-21-1	21" Green Bouffant, 100/BG 10BG/CS
DBGR-24-1	24" Green Bouffant, 100/BG 10BG/CS
DBGR-21-5	21" Green Bouffant, 100/BG 5BG/CS
DBGR-24-5	24" Green Bouffant, 100/BG 5BG/CS
DBRE-21-1	21" Red Bouffant, 100/BG 10BG/CS
DBRE-24-1	24" Red Bouffant, 100/BG 10BG/CS
DBYE-21-1	21" Yellow Bouffant, 100/BG 10BG/CS
DBYE-24-1	24" Yellow Bouffant, 100/BG 10BG/CS

ALL SAFETY ZONE POLYPROPYLENE BOUFFANT CAPS ARE LATEX FREE

ALL SAFETY ZONE POLYPROPYLENE BOUFFANT CAPS ARE LATEX FREE

PLEATED BOUFFANT CAP



PLEATED BOUFFANT CAPS (BAGGED)



DBWH-(SIZE)-1



DBWH-(SIZE)-1-PL



DBBL-(SIZE)-1-PL



DBYE-(SIZE)-1



DBGR-(SIZE)-1



DBBL-(SIZE)-1



DBRE-(SIZE)-1



HAIRNETS HOODS & BEARD COVERS

DPHN-18-1	18" White Heavyweight Polyester Hairnet, 100/BG 10BG/CS
DPHN-21-1	21" White Heavyweight Polyester Hairnet, 100/BG 10BG/CS
DPHN-24-1	24" White Heavyweight Polyester Hairnet, 100/BG 10BG/CS
DPHN-27-1	27" White Heavyweight Polyester Hairnet, 100/BG 10BG/CS
DPHN-32-1	32" White Heavyweight Polyester Hairnet, 100/BG 10BG/CS
DPHN-18-1-BR	18" Brown Heavyweight Polyester Hairnet, 100/BG 10BG/CS
DPHN-21-1-BR	21" Brown Heavyweight Polyester Hairnet, 100/BG 10BG/CS
DPHN-24-1-BR	24" Brown Heavyweight Polyester Hairnet, 100/BG 10BG/CS
DPHN-27-1-BR	27" Brown Heavyweight Polyester Hairnet, 100/BG 10BG/CS
DNHN-18-1-RB	18" White Fine Mesh Nylon Hairnet, 100/BG 10BG/CS
DNHN-21-1-RB	21" White Fine Mesh Nylon Hairnet, 100/BG 10BG/CS
DNHN-24-1-RB	24" White Fine Mesh Nylon Hairnet, 100/BG 10BG/CS
DNHN-27-1-RB	27" White Fine Mesh Nylon Hairnet, 100/BG 10BG/CS
DPLW-22-BK	22" Black Lightweight Nylon Hairnet, 144/BX 10BX/CS
DPLW-28-BK	28" Black Lightweight Nylon Hairnet, 144/BX 10BX/CS
DPLW-22-BR	22" Brown Lightweight Nylon Hairnet, 144/BX 10BX/CS
DPLW-28-BR	28" Brown Lightweight Nylon Hairnet, 144/BX 10BX/CS
DPLW-22-WH	22" White Lightweight Nylon Hairnet, 144/BX 10BX/CS
DPLW-28-WH	28" White Lightweight Nylon Hairnet, 144/BX 10BX/CS

ALL SAFETY ZONE HAIRNETS ARE LATEX FREE

DPHN-(SIZE)-1

DPHN-(SIZE)-1-BR

DPLW-(SIZE)-WH

DPLW-(SIZE)-BR



DHWH-1000	White Paper Hat, 100/BG 10BG/CS
DHOOD-1000	White Polypropylene Hood, 100/BG 10BG/CS
DHOOD-1000-XL	White Polypropylene Hood, 100/BG 10BG/CS
DHOOD-2000	White Polypropylene Hood, 100PCS/BG 20BG/CS
DHOOD-1000-BL	Blue Polypropylene Hood, 100PCS/BG 10BG/CS
DBRD-1000	White Polypropylene Beard Cover, 100/BG 10BG/CS
DBRD-1000XL	White Polypropylene Beard Cover, 100/BG 10BG/CS
DBRD-500	White Polypropylene Beard Cover, 100/BG 5BG/CS
DBRD-1000BL	Blue Polypropylene Beard Cover, 100/BG 10BG/CS
DBRD-1000-LF	White 100% Synthetic Beard Cover, 100/BG 10BG/CS
DPBC-1000	White Polyester Mesh Beard Net, 100/BG 10BG/CS
DPBC-1000-BR	Brown Polyester Mesh Beard Net, 100/BG 10BG/CS

ALL SAFETY ZONE HOODS AND BEARD COVERS ARE LATEX FREE

DHWH-1000



DHOOD-2000



DHOOD-1000-BL



DBRD-1000



DBRD-1000BL



DPBC-1000



DPBC-1000-BR

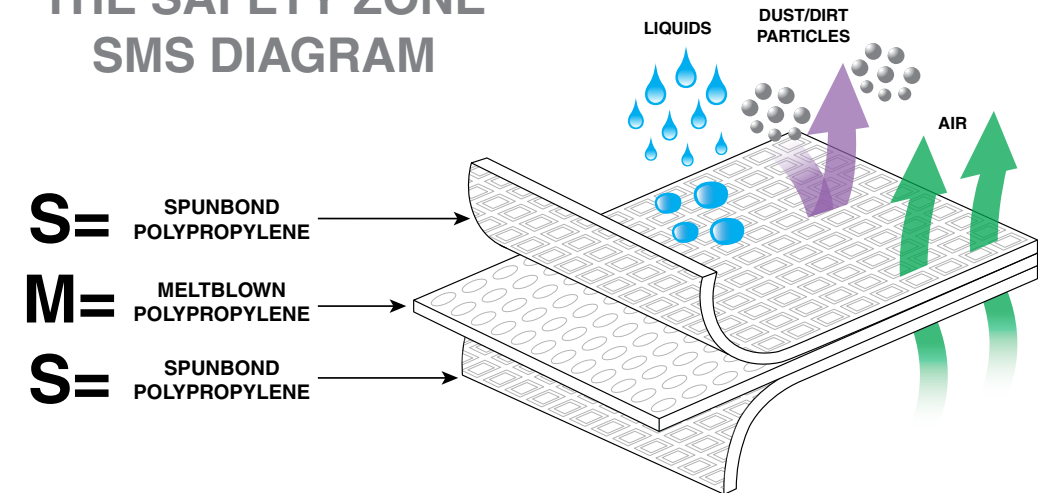


DISPOSABLE COVERALLS

DCWH-(SIZE)	White Disposable Polypropylene Coverall, No Hood or Elastic, 25/CS, MD-5X
DCWH-(SIZE)-40EWA	White 40 Gram Disposable Polypropylene Coverall, Elastic Wrists & Ankles, 25/CS, MD-6X
DCWF-(SIZE)-40	White 40 Gram Disposable Polypropylene Coverall, Hood, Boots & Elastic Wrist, 25/CS, MD-5
DCWF-(SIZE)	White Disposable Polypropylene Coverall, Hood, Boots & Elastic Wrist, 25/CS, MD-5X
DCBH-(SIZE)	Blue Disposable Polypropylene Coverall, No Hood or Elastic Wrists, 25/CS, MD-5X
DCBF-(SIZE)	Blue Disposable Polypropylene Coverall, Hood, Boots & Elastic Wrist, 25/CS, MD-5X

DCBH-(SIZE)-SMSEWA	Blue SMS Polypropylene Coverall, Elastic Wrists & Ankles, 25/CS, MD-5X
DCWH-(SIZE)-SMSEWA	White SMS Polypropylene Coverall, Elastic Wrists & Ankles, 25/CS, MD-5X
DCWF-(SIZE)-SMS	White SMS Polypropylene Coverall, Hood, Boots & Elastic Wrist, 25/CS, LG-5X

THE SAFETY ZONE SMS DIAGRAM



DCWH-(SIZE)



DCWH-(SIZE)-40EWA



DCWF-(SIZE)



DCBH-(SIZE)



DCBH-(SIZE)-SMSEWA



DCWH-(SIZE)-SMSEWA



DCWF-(SIZE)-SMS



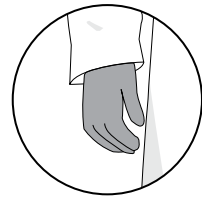
DISPOSABLE COVERALLS

DUPONT™ TYVEK® COVERALLS & LAB COAT

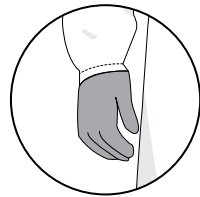
TY-14301-(SIZE)	White Dupont™ Tyvek® Lab Coat, 3 Pockets, 30/CS, SM-2X
TY-14120-(SIZE)	White Dupont™ Tyvek® Coverall, No Hood or Elastic Wrists, 25/CS, SM-4X
TY-14125-(SIZE)	White Dupont™ Tyvek® Coverall, Elastic Wrists & Ankles, 25/CS, SM-4X
TY-14127-(SIZE)	White Dupont™ Tyvek® Coverall, Hood, Elastic Wrists & Ankles, 25/CS, MD-4X
TY-14261-(SIZE)	White Dupont™ Tyvek® Coverall, Hood & Boots, 25/CS, MD-5X



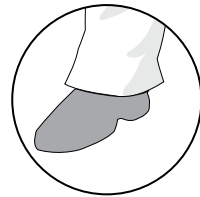
Tyvek® Coveralls Diagram



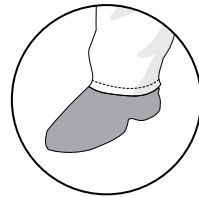
Open Wrists



Elastic Wrists

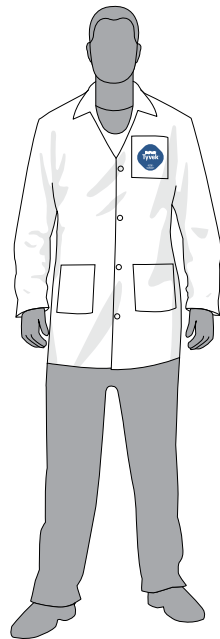


Open Ankles



Elastic Ankles

TY-14301-(SIZE)



Lab Coat with Open Wrists & Ankles

TY-14120-(SIZE)



Coverall with Open Wrists & Ankles

TY-14125-(SIZE)



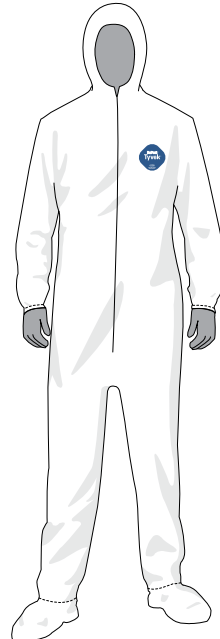
Coverall with Elastic Wrists & Ankles

TY-14127-(SIZE)



Coverall with Elastic Wrists & Ankles with Hood

TY-14261-(SIZE)

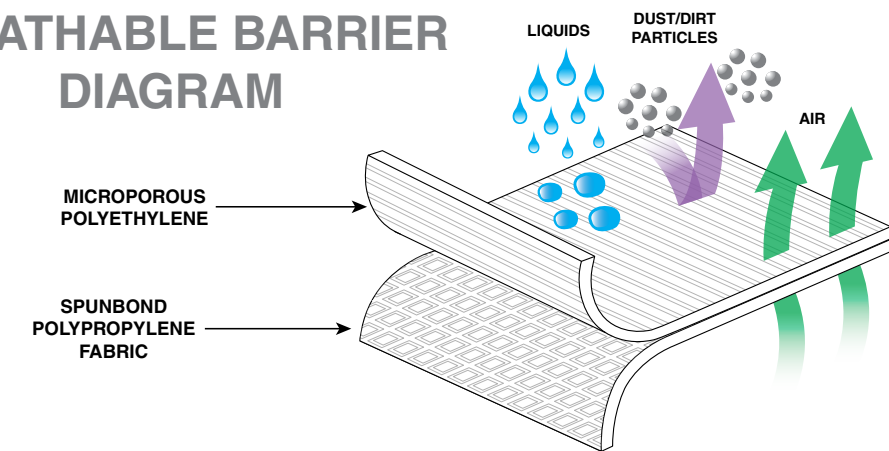


Coverall with Elastic Wrists & Ankles with Hood & Boots

BREATHABLE BARRIER MICROPOROUS COVERALLS

DCWH-(SIZE)-BB	White Breathable Microporous Coverall, No Hood or Elastic, Individually Bagged, 25/CS, SM-5X
DCWH-(SIZE)-BB-EWA	White Breathable Microporous Coverall, Elastic Wrists & Ankles, Individually Bagged, 25/CS, SM-5X
DCWH-(SIZE)-BB-HEWA	White Breathable Microporous Coverall, Hood, Elastic Wrists & Ankles, Individually Bagged, 25/CS, MD-5X
DCWF-(SIZE)-BB	White Breathable Microporous Coverall, Hood, Boots & Elastic Wrists, Individually Bagged, 25/CS, LG-5X
DLWH-(SIZE)-BB	White Breathable Microporous Lab Coat, Elastic Wrists & 3 Pockets, Individually Bagged, 30/CS, MD-5X

THE SAFETY ZONE BREATHABLE BARRIER DIAGRAM



DCWH-(SIZE)-BB-EWA



DCWF-(SIZE)-BB



DLWH-(SIZE)-BB



LAB COATS

APRONS VINYL

DLWH-(SIZE)-E-EW	White Polypropylene Economy Lab Coat, 3 Pockets, Elastic Wrists 30/CS, MD-XL
DLWH-(SIZE)-E-EW	White Polypropylene Economy Lab Coat, 3 Pockets, Elastic Wrists 30/CS, 2X-5X
DLWH-(SIZE)-ENP-EW	White Polypropylene Economy Lab Coat, No Pockets, Elastic Wrists 30/CS, SM-XL
DLWH-(SIZE)-ENP-EW	White Polypropylene Economy Lab Coat, No Pockets, Elastic Wrists 30/CS, 2X-5X
DLBL-(SIZE)-E-EW	Blue Polypropylene Economy Lab Coat, 3 Pockets, Elastic Wrists 30/CS, SM-XL
DLBL-(SIZE)-E-EW	Blue Polypropylene Economy Lab Coat, 3 Pockets, Elastic Wrists 30/CS, 2X-5X
DLBL-(SIZE)-ENP-EW	Blue Polypropylene Economy Lab Coat, No Pockets, Elastic Wrists 30/CS, SM-XL
DLBL-(SIZE)-ENP-EW	Blue Polypropylene Economy Lab Coat, No Pockets, Elastic Wrists 30/CS, 2X-5X
DLWH-(SIZE)	White Polypropylene Lab Coat, 3 Pockets & Elastic Wrists, 30/CS, MD-5X
DLBL-(SIZE)	Blue Polypropylene Lab Coat, 3 Pockets & Elastic Wrists, 30/CS, MD-4X
DLWH-(SIZE)-NP	White Polypropylene Lab Coat, No Pockets & Elastic Wrists, 30/CS, SM-5X
DLBL-(SIZE)-NP	Blue Polypropylene Lab Coat, No Pockets & Elastic Wrists, 30/CS, SM-5X
DLWH-(SIZE)-SMS50	White 50 Gram SMS Polypropylene Lab Coat, Knit Wrist, Collar & 3 Pockets, 30/CS, LG-5X
DLBL-(SIZE)-SMS50	Blue 50 Gram SMS Polypropylene Lab Coat, Knit Wrist, Collar & 3 Pockets, 30/CS, SM-5X
DLWH-(SIZE)-BB	White Breathable Microporous Lab Coat, Elastic Wrists & 3 Pockets, Individually Bagged, 30/CS, MD-5X
TY-14301-(SIZE)	White Dupont® Tyvek® Lab Coat, 3 Pockets, 30/CS, SM-2X

DAV06-35X45	6 MIL 35"X45" Blue Raw Edge Vinyl Apron, String Ties, 6 DZ/CS
DAV06-35X45-DC	6 MIL 35"X45" Blue Die Cut Vinyl Apron, 6 DZ/CS
DAV06-35X45WH	6 MIL 35"X45" Raw Edge White Vinyl Apron, String Ties, 6 DZ/CS
DAV08-35X45WH	8 MIL 35"X45" White Die Cut Vinyl Apron, 6 DZ/CS
DAV20-36X50	20 MIL 36"X50" Green PVC Apron, Stomach Patch, Sold Individually, 96/CS
DAV35-35X50	35 MIL 35"X50" Yellow Vinly Reinforced, Polyester Apron, Sold Individually, 50/CS

DLWH-(SIZE)-E-EW

DLWH-(SIZE)

DLBL-(SIZE)

DLBL-(SIZE)-SMS50

DLWH-(SIZE)-BB

DAV06-35X45

DAV06-35X45-DC

DAV08-35X45WH

DAV20-36X50

DAV35-35X50



DISPOSABLE APRONS

DAP1.25-24X42	1 MIL 24"x42" White Apron, Individually Bagged, 100/BX 10BX/CS
DAP1.25-28X46	1 MIL 28"x46" White Apron, Individually Bagged, 100/BX 10BX/CS
DAP1.25-28X46B	1 MIL 28"x46" White Apron, Bulk Packed, 100/BG 10BG/CS
DAP1.25-28X46BL	1 MIL 28"x46" Blue Apron, Bulk Packed, 100/BG 10BG/CS
DAP2.0-28X46-D	2 MIL 28"x46" White Apron, Dispenser Boxed, 100/BX 5BX/CS
DAP2.0-28X46DBL	2 MIL 28"x46" Blue Apron, Dispenser Boxed, 100/BX 5BX/CS
D-100DAP	Wall Mount Wire Rack for DAP10 Aprons

DAP10-28X46-WH	10 MIC 28"x46" White High Density Apron, 100/Header 10Headers/CS
DAP10-28X46-BL	10 MIC 28"x46" Blue High Density Apron, 100/Header 10Headers/CS
DAP10-28X46-RD	10 MIC 28"x46" Red High Density Apron, 100/Header 10Headers/CS
DAP10-28X46-YE	10 MIC 28"x46" Yellow High Density Apron, 100/Header 10Headers/CS
CPE-(SIZE)-PE	Blue Cast Polyethylene "CPE" Apron, Thumb Hole Sleeves, 100/CS, LG or XL

ALL SAFETY ZONE APPAREL COMPLY WITH THE FFDCA FOR FOOD CONTACT AND ARE DEHP FREE

ALL SAFETY ZONE APPAREL COMPLY WITH THE FFDCA FOR FOOD CONTACT AND ARE DEHP FREE



HEAVY DUTY APRONS

HYCAR

AP-WH-45MT	14 Oz. 36"x45" Medium Weight White Hycar Apron, Four Grommets & String Ties, 12/CS
AP-WH-48MT	14 Oz. 36"x48" Medium Weight White Hycar Apron, Four Grommets & String Ties, 12/CS
AP-WH-48HT	16 Oz. 36"x48" Heavy Weight White Hycar Apron, Four Grommets & String Ties, 12/CS
AP-MH-48MT	14 Oz. 36"x48" Medium Weight Maroon Hycar Apron, Four Grommets & String Ties, 12/CS
AP-MH-48HT	16 Oz. 36"x48" Heavy Weight Maroon Hycar Apron, Four Grommets & String Ties, 12/CS
AP-BH-45MT	14 Oz. 36"x45" Medium Weight Black Hycar Apron, Four Grommets & String Ties, 12/C
AP-BH-48MT	14 Oz. 36"x48" Medium Weight Black Hycar Apron, Four Grommets & String Ties, 12/CS
AP-YH-45MT	14 Oz. 36"x45" Medium Weight Yellow Hycar Apron, Four Grommets & String Ties, 12/CS
AP-YH-48MT	14 Oz. 36"x48" Medium Weight Yellow Hycar Apron, Four Grommets & String Ties, 12/CS
AP-YH-45HT	16 Oz. 36"x45" Heavy Weight Yellow Hycar Apron, Four Grommets & String Ties, 12/CS
AP-YH-48HT	16 Oz. 36"x48" Heavy Weight Yellow Hycar Apron, Four Grommets & String Ties, 12/CS
AP-YH-48HBP	16 Oz. 36"x48" Heavy Weight Yellow Hycar Apron, 26 Oz. Belly Patch, Four Grommets & String Ties, 12/CS
AP-YH-48HBBP	16 Oz. 36"x48" Heavy Weight Yellow Hycar Apron, 26 Oz. Belly Patch, Adjustable Buckle On Neck, Four Grommets & String Ties, 12/CS

NEOPRENE

AP-BN-45MT	14 Oz. 36"x45" Medium Weight Black Neoprene Apron, Four Grommets & String Ties, 12/CS
AP-BN-45HT	18 Oz. 36"x45" Heavy Weight Black Neoprene Apron, Four Grommets & String Ties, 12/CS

BONING APRON

AP-BON-APN	3/8" Thick 14"x18" White Boning Apron, PVC on Two Sides of Hemp & Adjustable Buckle Strap, 12/CS (To be worn under an apron)
------------	------------------------------------------------------------------------------------------------------------------------------

YELLOW
HYCAR APRON



WHITE
HYCAR APRON



MAROON
HYCAR APRON



YELLOW
HYCAR APRON



BLACK
NEOPRENE APRON



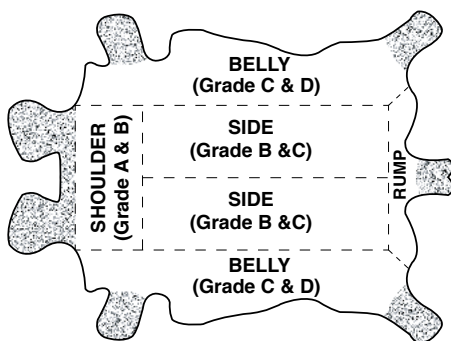
WHITE
BONING APRON



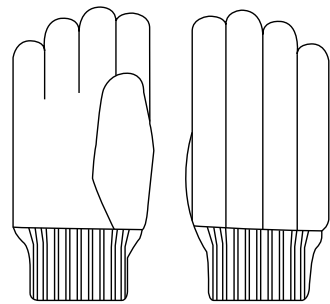
LEATHER GLOVES

GLP1-(SIZE)-A1C	"A/B" Grade, Clute Cut Leather Palm, Knit Wrist, 20DZ/CS, Mens or Womens
GLP1-MN-H4D	"B" Grade, Gunn Cut Leather Patch Palm, Knit Wrist, 10DZ/CS, Mens
GLP1-MN-N4D	"B" Grade, Gunn Cut Leather Patch Palm, Denim Safety Cuff, 10DZ/CS, Mens
GLP1-(SIZE)-C2C	"A/B" Grade, Gunn Cut Leather Palm, Pasted Safety Cuff, 10DZ/CS, Mens or Womens
GLP1-(SIZE)-B2D	"B" Grade, Gunn Cut Leather Palm, Rubberized Safety Cuff, 10DZ/CS, Mens or Womens
GLP1-(SIZE)-H1C	"A/B" Grade, Gunn Cut Leather Palm, Green & Red Cotton Knit Wrist, 10DZ/CS, Mens or Womens
GLP1-MN-H2C	"A/B" Grade, Gunn Cut Leather Palm, Blue & Red Cotton, Knit Wrist, 10DZ/CS, Mens
GLP1-(SIZE)-B1C	"A/B" Grade, Gunn Cut Leather Palm, Rubberized Safety Cuff, 10DZ/CS, Mens, Womens or XL
GLP1-MN-B2B	"A" Grade, Gunn Cut Leather Palm, Rubberized Safety Cuff, 10DZ/CS, Mens
GLP1-MN-E2D	"B" Grade, Gunn Cut Leather Patch Palm, Pasted Safety Cuff, 10DZ/CS, Mens
GLP1-MN-B7C	"A" Grade, Gunn Cut Leather Palm, Orange Rubberized Safety Cuff, 10DZ/CS, Mens
GLP1-MN-B3A	"Premium A" Grade, Gunn Cut Leather Palm, Rubberized Safety Cuff, 10DZ/CS, Mens
GLF1-MN-B1C	"A/B" Grade, Gunn Cut Leather Palm, Full Leather Back, Rubberized Safety Cuff, 10DZ/CS, Mens

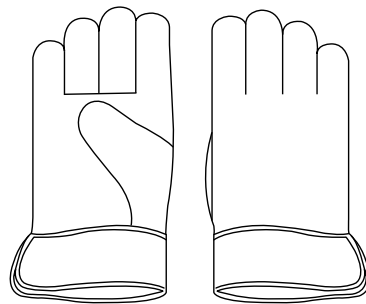
GRADES OF LEATHER



CLUTE CUT



GUNN CUT



GLP1-(SIZE)-E2D



GLP1-(SIZE)-B2D



GLP1-MN-H1C



GLP1-MN-H2C



GLP1-(SIZE)-B1C



GLP1-MN-B2B



GLP1-(SIZE)-A1C



GLP1-MN-H4D



GLP1-MN-N4D



GLP1-MN-B7C



GLP1-MN-B3A



GLF1-MN-B1C



LEATHER GLOVES

WELDERS & DRIVERS GLOVES

GLP1-(SIZE)-G1C	"A/B" Grade Gunn Cut Leather, 4½" Rubberized Gauntlet Cuff, 1DZ Pair/Bag 10DZ/CS, Mens or XL
GLP1-MN-G2B	"A" Grade Gunn Cut Leather, 4½" Rubberized Gauntlet Cuff, 1DZ Pair/Bag 10DZ/CS, Mens
GLF1-MN-G1C	"A/B" Grade Gunn Cut Full Leather Back, 4½" Rubberized Gauntlet Cuff, 1DZ Pair/Bag 10DZ/CS, Mens
GLR1-MN-B2S	"A/B" Grade Gunn Cut Double Reinforced Leather Palm, Rubberized Cuff, 1DZ Pair/Bag 10DZ/CS, Mens
GLR1-MN-B1S	"A/B" Grade Gunn Cut Double Reinforced Leather Palm, Rubberized Cuff, 1DZ Pair/Bag 10DZ/CS, Mens
GLR1-MN-B1C	"A/B" Grade Double Reinforced Leather Palm, Rubberized Safety Cuff, 1DZ Pair/Bag 10DZ/CS, Mens
GLR1-MN-B2B	"A" Grade Double Reinforced Leather Palm, Rubberized Safety Cuff, 1DZ Pair/Bag 10DZ/CS, Mens

GLW1-MN-W8C	"A/B" Grade Gunn Cut Gray Leather Welders, 1DZ Pair/Bag 6DZ/CS, Mens
GLW1-MN-W9A	"A" Grade Gunn Cut Blue Leather Welders, Kevlar Stitching, 1DZ Pair/Bag 6DZ/CS, Mens
GLD1-(SIZE)-S8C	"A/B" Grade Gunn Cut Gray Leather Drivers, Straight Thumb, 1DZ Pair/Bag 10DZ/CS, SM-XL
GLD5-(SIZE)-P0B	"A/B" Top Grain Pig Gunn Cut Drivers, Keystone Thumb, 1DZ Pair/Bag 10DZ/CS, SM-2X
GLD2-(SIZE)-P0B	"A/B" Top Grain Cow Gunn Cut Drivers, Keystone Thumb, 1DZ Pair/Bag 10DZ/CS, SM-3X

GLP1-(SIZE)-G1C



GLP1-MN-G2B



GLF1-MN-G1C



GLW1-MN-W8C



GLW1-MN-W9A



GLR1-MN-B2S



GLR1-MN-B1S



GLR1-MN-B1C



GLD1-(SIZE)-S8C



GLD5-(SIZE)-P0B



GLD2-(SIZE)-P0B



COATED

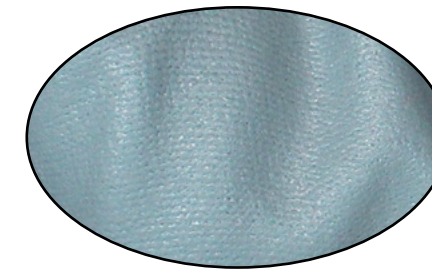
KNIT

GLOVES

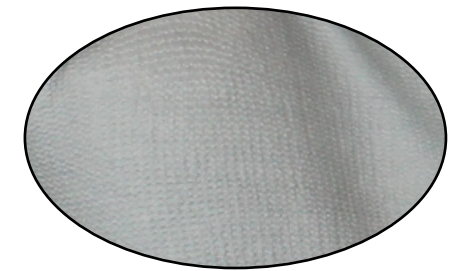
GSPC-(SIZE)-2C	Blue Latex Coated String Knit, 1DZ Pair/Bag 18DZ/CS, MD-XL
GRSL-(SIZE)	Premium Blue Latex Coated Gray String Knit, 1DZ Pair/Bag 6DZ/CS, SM-XL
GRSL-(SIZE)-TR	Premium Gray Latex Coated Gray String Knit, Terry Loop Thermal Lining, 1DZ Pair/Bag 6DZ/CS, SM-XL
G-NIDEX-(SIZE)	Black Nitrile Coated Nylon Knit, 1DZ Pair/Bag 6DZ/CS, SM-2X
G-NIDEX-(SIZE)-GF	Gray Foam Nitrile Coated Nylon Knit, 1DZ Pair/Bag 6DZ/CS, XS-2X
GNPU-(SIZE)-4-GY-GY	Gray Polyurethane Coated Gray Nylon Knit, 1DZ Pair/Bag 6DZ/CS, XS-2X
GS13-(SIZE)-CYPV	Gray Polyurethane Coated Cut-Resistant High-Pressure Polyethylene "HPPE" Knit, Cut Level 3, Sold by the Pair, 6DZ/CS, XS-2X
G-HIDEX-(SIZE)	High Dexterity Glove, Stretch Nylon Back & Vibration Absorbing Palm, Sold by the Pair, 50PRS/CS, XS-2X
G-HIDEX-(SIZE)-2	High Dexterity Glove, Stretch Nylon Back & Single Layer Palm, Sold by the Pair, 50PRS/CS, SM-2X
GNCP-(SIZE)-MN/WN	Cut & Sewn Nitrile Gloves, Perforated Back, 1DZ Pair/Bag 12DZ/CS, Mens or Womens, SM-XL



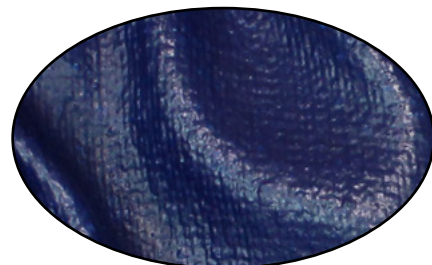
G-NIDEX-(SIZE)



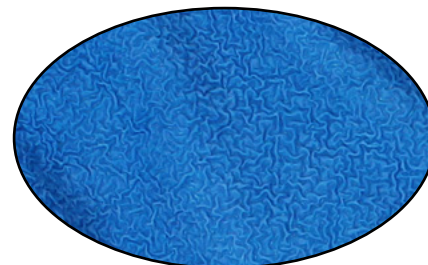
G-NIDEX-(SIZE)-GF



GNPU-(SIZE)-4-GY-GY



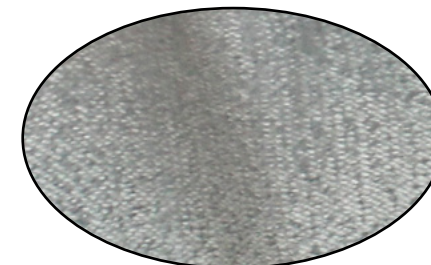
GSPC-(SIZE)-2C



GRSL-(SIZE)



GRSL-(SIZE)-TR



GS13-(SIZE)-CYPV



G-HIDEX-(SIZE)



G-HIDEX-(SIZE)-2



COATED KNIT GLOVES

DOTTED GLOVES

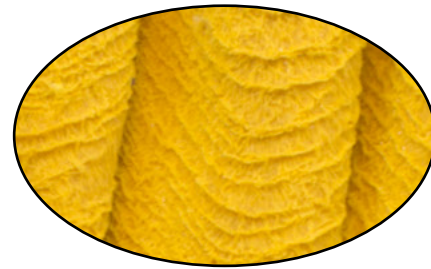
GRKW-MN-1	Yellow Crinkle Finish Latex, Cut Resistant, Knit Wrist, 1DZ Pair/Bag 10DZ/CS, Mens
GRSC-MN-1	Yellow Crinkle Finish Latex, Cut Resistant, Safety Cuff, 1DZ Pair/Bag 10DZ/CS, Mens
GNKW-MN-12	Blue Nitrile Dipped Smooth Finish, Knit Wrist, 1DZ Pair/Bag 12DZ/CS, Mens
GNSC-MN-12	Blue Nitrile Dipped Smooth Finish, Safety Cuff, 1DZ Pair/Bag 12DZ/CS, Mens

GJBC-KW-1-PD	Black PVC Dotted Palm Brown Jersey, 1DZ Pair/Bag 25DZ/CS, LG
GSCC-(SIZE)	PVC Criss-Cross Grip on Orange Nylon Knit, 1DZ Pair/Bag 12DZ/CS, SM-XL
GSBS-(SIZE)-2C-20	Black PVC Dotted 1 Sided Cotton Polyester String Knit, 1DZ Pair/Bag 20DZ/CS, MD-LG
GSBS-(SIZE)-2P-20	Premium Black PVC Dotted 1 Sided Cotton Polyester String Knit, 1DZ Pair/Bag 20DZ/CS, MD-LG
GSBD-(SIZE)-2C-20	Black PVC Dotted 2 Sided Cotton Polyester String Knit, 1DZ Pair/Bag 20DZ/CS, MD-LG
GSBD-(SIZE)-2P-20	Premium Black PVC Dotted 2 Sided Cotton Polyester String Knit, 1DZ Pair/Bag 20DZ/CS, MD-LG
GCD8-(SIZE)-1C	Black PVC Dotted Cotton Polyester Canvas Clute Cut, Knit Wrist, 1DZ Pair/Bag 25DZ/CS, MD-LG

GRKW-MN-1



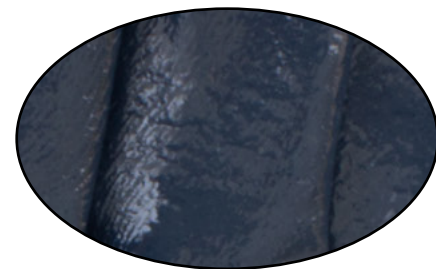
GRSC-MN-1



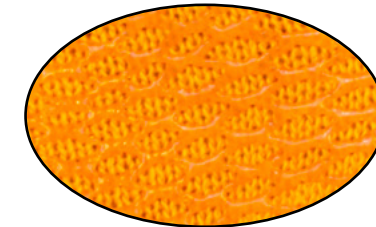
GNKW-MN-12



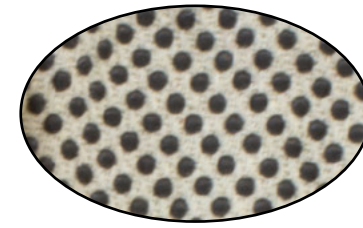
GNSC-MN-12



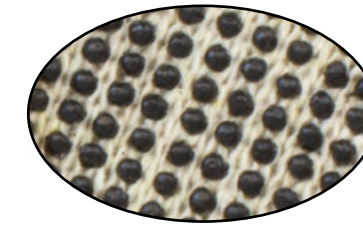
GJBC-KW-1-PD



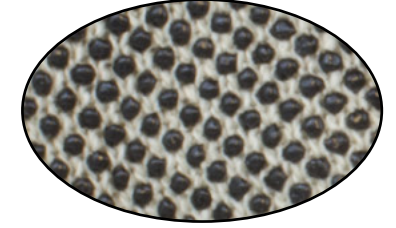
GSCC-(SIZE)



GCD8-(SIZE)-1C



GSBS-(SIZE)-2C-20



GSBD-(SIZE)-2P-20



INSPECTORS GLOVES

STRING KNIT GLOVES

GSPN-A	Thermal Glove Liner/Inspectors Glove, One Size Fits Most, 25DZ/Bag, 2 Bags/CS
GILW-(SIZE)-1	100% Cotton Lisle Light Weight Inspector Glove, 1DZ Pair/Bag 100DZ/CS, MD-LG
GIMW-(SIZE)-1SP	100% Cotton Lisle Medium Weight Inspectors Glove, 1DZ Pair/Bag 100DZ/CS, MD-LG
GI4W-(SIZE)-4-100	Synthetic Mens Inspectors, 40 Denier, 1DZ Pair/Bag 100DZ/CS, SM-XL
GI4L-(SIZE)-4-100	Synthetic Womens Inspectors, 40 Denier, 1DZ Pair/Bag 100DZ/CS, MD-XL
GILW-M2-1P	12" 100% Cotton Lisle Light Weight Inspector Glove, 1DZ Pair/Bag 100DZ/CS, LG
GILW-M4-1P	14" 100% Cotton Lisle Light Weight Inspector Glove, 1DZ Pair/Bag 100DZ/CS, LG
GIMW-M2-1P	12" 100% Cotton Lisle Medium Weight Inspector Glove, 1DZ Pair/Bag 100DZ/CS, LG
FPF-(SIZE)	Powder Free Latex Finger Cots, 5 Gross Per Bag, (720/BG) 40Bags/CS, SM-XL
FPB-(SIZE)	Powder Free Latex Finger Cots, 1 Gross Per Box, (144/BX) 200Boxes/CS, SM-XL

GSLW-(SIZE)-2C-NRB	Light Weight Cotton Polyester String Knit, 1DZ Pair/Bag 40DZ/CS, MD-LG
GSLW-(SIZE)-2P-NRB	Premium Light Weight Cotton Polyester String Knit, 1DZ Pair/Bag 40DZ/CS, MD-LG
GSMW-(SIZE)-2C-NRB	Medium Weight Cotton Polyester String Knit, 1DZ Pair/Bag 25DZ/CS, MD-LG
GSMW-(SIZE)-2P-NRB	Premium Medium Weight Cotton Polyester String Knit, 1DZ Pair/Bag 25DZ/CS, MD-LG
GSHW-(SIZE)-1C-NRB	Heavy Weight Cotton Polyester String Knit, 1DZ Pair/Bag 25DZ/CS, MD-LG
GSMW-(SIZE)-2C-BW70	Bright White Medium Weight Cotton Polyester String Knit, 1DZ Pair/Bag 25DZ/CS, MD-LG
GSMW-(SIZE)-2C-GY	Gray Medium Weight Cotton Polyester String Knit, 1DZ Pair/Bag 30DZ/CS, MD-LG
GSBG-(SIZE)	Cut-Resistant String Knit, Spectra Wrapped Stainless Steel Core, Sold by the Glove, XS-XL

(NRB = NO RUBBER BAND)



INSULATED

GLOVES

GJBC-MN-1-RL-12	Insulated Cotton Polyester Brown Jersey, Red Jersey Lining, 1DZ Pair/Bag 12DZ/CS, Mens
GRSL-(SIZE)-TR	Premium Gray Latex Coated Gray String Knit, Terry Loop Thermal Lining, 1DZ Pair/Bag 6DZ/CS, SM-XL
G-HIDEX-(SIZE)-TH	High Dexterity Glove, Stretch Nylon Back, Single Layer Palm Thinsulate™ Lining, Sold by the Pair, 50PRS/CS, SM-XL
GLL5-(SIZE)-P0B	Premium Top Grain Pig Drivers, Keystone Thumb, Jersey Lining, 1DZ Pair/Bag 10DZ/CS, MD-XL
GLL2-(SIZE)-P0B	Premium Top Grain Cow Drivers, Keystone Thumb, Jersey Lining, 1DZ Pair/Bag 10DZ/CS, SM-XL
GLL5-(SIZE)-P0B-TH	Premium Top Grain Pig Drivers, Keystone Thumb, Thinsulate™ Lining, 1DZ Pair/Bag 6DZ/CS, LG-XL
GLL7-(SIZE)-TH	Black Soft Grain Leather Drivers, Keystone Thumb, Thinsulate™ Lining, Sold by the Pair, MD-XL

GLL2-(SIZE)-KT	Premium Top Grain Cow Drivers, Keystone Thumb, Thinsulate™ Lining, 1DZ Pair/Bag 6DZ/CS, MD-XL
GLL2-(SIZE)-KP	Premium Top Grain Cow Drivers, Keystone Thumb, Pile Lining, 1DZ Pair/Bag 6DZ/CS, MD-XL
GLL1-(SIZE)-SF	Split Cow Leather Drivers, Straight Thumb, Flannel Lining, 1DZ Pair/Bag 6DZ/CS, LG-XL
GLL1-(SIZE)-P7A-T	Split Cow Leather Drivers, Keystone Thumb, Thinsulate™ Lining, 1DZ Pair/Bag 6DZ/CS, SM-3X
GLL1-XL-B3A	Premium Grade Leather, Rubberized Safety Cuff, Jersey Lining, 1DZ Pair/Bag 10DZ/CS, XL
GLL1-(SIZE)-GP	Premium Grade Leather, Rubberized Safety Cuff, Pile Lining, 1DZ Pair/Bag 6DZ/CS, LG-XL
GLL2-(SIZE)-B3A	Premium Grade Leather, Rubberized Safety Cuff, Pile Lining, 1DZ Pair/Bag 6DZ/CS, LG-XL
GLL5-(SIZE)-GT	Premium Top Grain Pig Leather, Safety Cuff, Fleece Lining, 1DZ Pair/Bag 6DZ/CS, LG-XL

GJBC-(SIZE)-MN-1-RL-12



GRSL-(SIZE)-TR



G-HIDEX-(SIZE)-TH



GLL2-(SIZE)-KT



GLL2-(SIZE)-KP



GLL1-(SIZE)-SF



GLL1-(SIZE)-P7A-T



GLL5-(SIZE)-P0B



GLL2-(SIZE)-P0B



GLL5-(SIZE)-P0B-TH



GLL7-(SIZE)-TH



GLL1-(XL)-B3A



GLL1-(SIZE)-GP



GLL2-(SIZE)-B3A



GLL5-(SIZE)-GT



COTTON JERSEY & CANVAS GLOVES

HEAT RESISTANT GLOVES

GJWR-(SIZE)-1P	Reversible 100% Cotton Natural Jersey, 1DZ Pair/Bag 25DZ/CS, Mens or Womens
GJBC-(SIZE)-1	Brown Jersey Clute Cut, Knit Wrist, 1DZ Pair/Bag 25DZ/CS, Mens or Womens
GC08-(SIZE)-2C	8 Oz. Cotton Polyester Canvas Clute Cut, Knit Wrist, 1DZ Pair/Bag 25DZ/CS, Mens or Womens
GC08-(SIZE)-1P	8 Oz. 100% Cotton Canvas Clute Cut, Knit Wrist, 1DZ Pair/Bag 25DZ/CS, Mens or Womens
GC10-MN-1P	10 Oz. 100% Cotton Canvas Clute Cut, Knit Wrist, 1DZ Pair/Bag 25DZ/CS, Mens
GC12-MN-1P	12 Oz. 100% Cotton Canvas Clute Cut, Knit Wrist, 1DZ Pair/Bag 25DZ/CS, Mens
PAD-9X11	9" X 11" Terry Cloth Baking Pad, Double Thick with Elastic Strap, Sold by the Dozen

GHKI-18-1C	18 Oz. Hot Mill Nap In, Knit Wrist, 1DZ Pair/Bag 10DZ/CS, One Size Fits All
GHKO-18-1	18 Oz. Hot Mill Nap Out, Knit Wrist, 1DZ Pair/Bag 10DZ/CS, One Size Fits All
GHBT-18-1C	18 Oz. Cotton Hot Mill, Band Top, 1DZ Pair/Bag 10DZ/CS, One Size Fits All
GHBT-24-1C	24 Oz. Cotton Hot Mill, Band Top, 1DZ Pair/Bag 10DZ/CS, One Size Fits All
GHBT-26-1C	26 Oz. Cotton Hot Mill, Band Top, 1DZ Pair/Bag 10DZ/CS, One Size Fits All
GHGT-24-1C	24 Oz. Cotton Hot Mill, 4½" Gauntlet Cuff, 1DZ Pair/Bag 10DZ/CS, One Size Fits All
GT24-LG-12	24 Oz. Terry Cloth, Knit Wrist, 1DZ Pair/Bag 10DZ/CS, One Size Fits All
GHKG-18-1C	18 Oz. Golden Fleece Chore, Knit Wrist, 1DZ Pair/Bag 10DZ/CS, One Size Fits All

GJWR-(SIZE)-1P



GJBC-(SIZE)-1C



PAD-9X11



GHKI-18-1C



GHKO-18-1



GHBT-18-1C
GHBT-24-1C
GHBT-26-1C



GC08-(SIZE)-1P



GC10-(SIZE)-1P



GC12-(SIZE)-1P



GHGT-24-1C



GT24-LG-12



GHKG-18-1



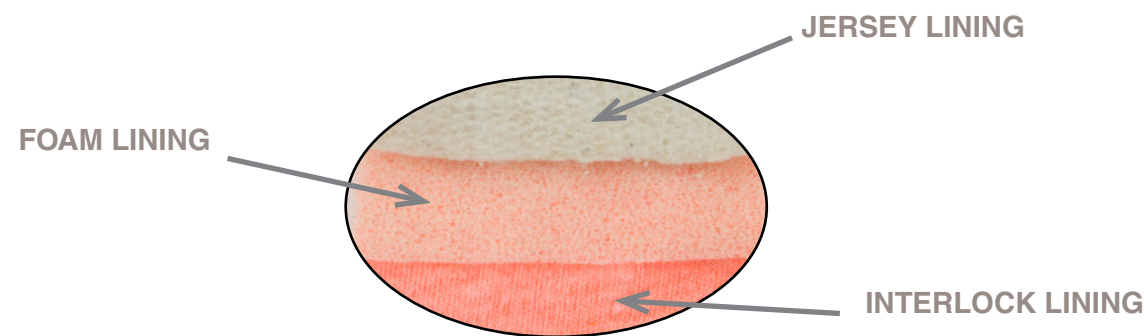
ORANGE PVC GLOVES

BLACK PVC GLOVES

GPOF-KW-2R-3	Orange PVC, Jersey Insulated Foam Lining, Knit Wrist, Rough Finish, 1DZ Pair/Bag 3DZ/CS
GPOF-SC-2R-3	Orange PVC, Jersey Insulated Foam Lining, Safety Cuff, Rough Finish, 1DZ Pair/Bag 3DZ/CS
GPOF-10-2R-3	10" Orange PVC, Jersey Insulated Foam Lining, Rough Finish, 1DZ Pair/Bag 3DZ/CS
GPOF-12-2R-3	12" Orange PVC, Jersey Insulated Foam Lining, Rough Finish, 1DZ Pair/Bag 3DZ/CS
GPOF-14-2R-3	14" Orange PVC, Jersey Insulated Foam Lining, Rough Finish, 1DZ Pair/Bag 3DZ/CS

GPBJ-KW-2R-6	Black Double Dipped PVC, Jersey Lining, Knit Wrist, Rough Finish, 1DZ Pair/Bag 6DZ/CS
GPBI-KW-1P-1	Black Single Dipped PVC, Interlock Lining, Knit Wrist, Pimple Finish, 1DZ Pair/Bag 10DZ/CS
GPBI-KW-1S-1	Black Single Dipped PVC, Interlock Lining, Knit Wrist, Smooth Finish, 1DZ Pair/Bag 10DZ/CS
GPBJ-10-2R-6	10" Black Double Dipped PVC, Jersey Lining, Rough Finish, 1DZ Pair/Bag 6DZ/CS
GPBJ-12-2R-6	12" Black Double Dipped PVC, Jersey Lining, Rough Finish, 1DZ Pair/Bag 6DZ/CS
GPBJ-14-2R-6	14" Black Double Dipped PVC, Jersey Lining, Rough Finish, 1DZ Pair/Bag 6DZ/CS
GPBJ-18-2R-6	18" Black Double Dipped PVC, Jersey Lining, Rough Finish, 1DZ Pair/Bag 6DZ/CS
GPBI-12-1P-1	12" Black Single Dipped PVC, Interlock Lining, Pimple Finish, 1DZ Pair/Bag 10DZ/CS
GPBI-10-1S-1	10" Black Single Dipped PVC, Interlock Lining, Smooth Finish, 1DZ Pair/Bag 10DZ/CS
GPBI-12-1S-1	12" Black Single Dipped PVC, Interlock Lining, Smooth Finish, 1DZ Pair/Bag 10DZ/CS
GPBI-14-1S-1	14" Black Single Dipped PVC, Interlock Lining, Smooth Finish, 1DZ Pair/Bag 10DZ/CS
GPBI-18-1S-1	18" Black Single Dipped PVC, Interlock Lining, Smooth Finish, 1DZ Pair/Bag 10DZ/CS

3 LAYER INSULATED PVC



GPOF-KW-2R-3



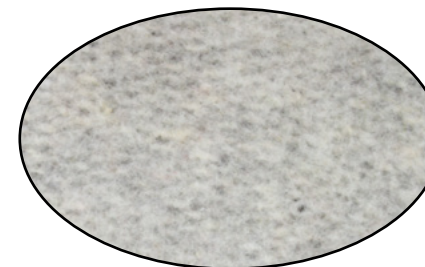
GPOF-SC-2R-3



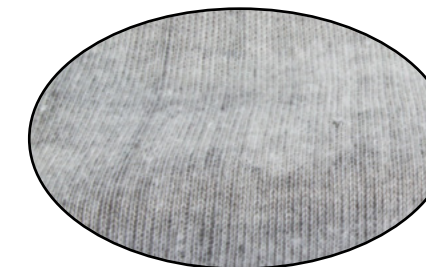
GPOF-10-2R-3
GPOF-12-2R-3
GPOF-14-2R-3



JERSEY LINING



INTERLOCK LINING



GPBJ-KW-2R-6



GPBJ-10-2R-6
GPBJ-12-2R-6
GPBJ-14-2R-6
GPBJ-18-2R-6



GPBI-10-1S-1
GPBI-12-1S-1
GPBI-14-1S-1
GPBI-18-1S-1



PROTECTIVE EYEWEAR

EYE WEAR

ES-21	Black, Blue or USA Frame, Clear or Smoke Lens & Adjustable Temple, ANSI Z87+ Approved, 12Pair/BX
ES-32	Wrap Around Style, Black, Blue or USA Frame, Clear, Smoke or Indoor/ Outdoor Lens & Articulating Adjustable Temple, ANSI Z87+ Approved, 12Pair/BX
ES-41	Wrap Around Style, Black Frame, Clear, Smoke or Indoor/ Outdoor Lens & Adjustable Temple, ANSI Z87+ Approved, 12Pair/BX
ES-51	Wrap Around Style, Clear or Smoke Frame, Clear, Smoke or Indoor/ Outdoor Lens, ANSI Z87+ Approved, 12Pair/BX
ES-VS	Visitor Specs, Clear Frame & Clear Lens, ANSI Z87+ Approved, 12Pair/BX
ES-GP	Perforated Impact Goggle, ANSI Z87+ Approved, 24Pair/BX
ES-GC	Chemical Impact Goggle, Indirect Ventilation, ANSI Z87+ Approved, 24Pair/BX
ES-GC/AF	Chemical Impact Goggle, Indirect Ventilation & Anti Fog Lens, ANSI Z87+ Approved, 24Pair/BX

LENS CLEANING

ES-LCT	Safety Zone Pre Moistened Anti-Fog Lens Cleaning Towelettes, 100BX 10BX/CS
ES-LCS-8	Safety Zone Lens Cleaning Station, 8 Oz. Anti-Fog Lens Cleaning Solution, 600Tissues/BX 10BX/CS
ES-LCS-16	Safety Zone Lens Cleaning Station, 16 Oz. Anti-Fog Lens Cleaning Solution, 1,200Tissues/BX 4BX/CS

ES-21BKCL



ES-21USACL



ES-21BKSM



ES-32BKCL



ES-32BKIO



ES-32BKSM



ES-41BKCL



ES-41BKIO



ES-41BKSM



ES-51FTCL



ES-51CLIO



ES-51BKSM



ES-VS



ES-GP



ES-GC
ES-GC/AF



ES-LCT



ES-LCS-8



ES-LCS-16



HEARING PROTECTION

RESPIRATORY PROTECTION

RM-6405	Moldex® Rockets NRR 27dB Reusable Earplugs, Corded with Pocket-Pak Case, 50 Pairs/BX, 4 BX/CS
RM-6604	Moldex® SparkPlugs NRR 33dB Foam Uncorded Earplugs, 200 Pairs/BX, 10BX/CS
RM-6654	Moldex® SparkPlugs NRR 33dB Foam Corded Earplugs, 100 Pairs/BX, 20BX/CS
RM-6644	Moldex® SparkPlugs PlugStation Dispenser, 250 Pairs/Dispenser, 6 Dispensers/CS
RM-6645	Moldex® SparkPlugs PlugStation Dispenser, 500 Pairs/Dispenser, 4 Dispensers/CS
RM-6880	Moldex® Corded SparkPlugs PlugStation Dispenser, 150 Pairs/Dispenser, 4 Dispensers/CS
QB3HYG	Howard Leight® Banded Ear Plug, 23 NRR, 1/BG 10BG/CS
RH-QM24+	Howard Leight® Multiple-Position Earmuff, 25 NRR, Sold by the Each
RH-LL-1	Howard Leight Laser Lite® Uncorded Ear Plug, 32 NRR, 200 Pairs/BX 10BX/CS
RH-LL-30	Howard Leight Laser Lite® Corded Ear Plug, 32 NRR, 100 Pairs/BX 10BX/CS
RH-MAX-1	Howard Leight Max® Uncorded Ear Plug, 33 NRR, 200 Pairs/BX 10BX/CS
RH-MAX-30	Howard Leight Max® Corded Ear Plug, 33 NRR, 100 Pairs/BX 10BX/CS
RH-LPF-30	Howard Leight Max Lite® Corded Ear Plug, 30 NRR, 100 Pairs/BX 10BX/CS
RH-LT-30	Howard Leight Laser Track® Metal Detectable Corded Ear Plug, 32 NRR, 100 Pairs/BX 10BX/CS

RS-600	Pleated Tie On Procedural Mask, 50/BX 10BX/CS
RS-700	Pleated Ear Loop Procedural Mask, 50/BX 10BX/CS
RS-810	White Cone Non-Rated Nuisance Level Dust Mask, 50/BX 20BX/CS
RS-500	Blue Cone Non-Rated Nuisance Level Dust Mask, 50/BX 20BX/CS
RS-700-BFE	Pleated Ear Loop Procedural Mask, Meets FF&BFE Standards, 50/BX 10BX/CS
RS-900-N95	Safety Zone Brand NIOSH Approved Respirator, 20/BX 12BX/CS
RS-920-EV-N95	Safety Zone Brand NIOSH Approved Respirator, Exhalation Valve, 10/BX 12BX/CS
RM-4200N95	Moldex® Brand NIOSH Approved AirWave Particulate Respirator, 10/BX 8BX/CS, MD/LG
RM-2200N95	Moldex® Brand NIOSH Approved Respirator, 20/BX 12BX/CS
RM-2300N95	Moldex® Brand NIOSH Approved Respirator, Exhalation Valve, 10/BX 10BX/CS
RM-8102	Moldex® Brand Pre-Assembled Half Mask Respirator, Organic Vapor Cartridge, Sold by the Each



HARD HATS & BUMP CAPS

RAIN WEAR

NS-BC86010000	Honeywell White Vented Deluxe Bump Cap, HDPE Shell, Pinlock Suspension, Sold by the Each
NS-BC86070000	Honeywell Blue Vented Deluxe Bump Cap, HDPE Shell, Pinlock Suspension, Sold by the Each
NS-A59010000	Honeywell Peak White HDPE Shell Hard Hat, 4-PT Pinlock Suspension, Sold by the Each
NS-A59R010000	Honeywell Peak White HDPE Shell Hard Hat, 4-PT Ratchet Suspension, Sold by the Each
NS-A59020000	Honeywell Peak Yellow HDPE Shell Hard Hat, 4-PT Pinlock Suspension, Sold by the Each
NS-A59R020000	Honeywell Peak Yellow HDPE Shell Hard Hat, 4-PT Ratchet Suspension, Sold by the Each
NS-A59030000	Honeywell Peak Orange HDPE Shell Hard Hat, 4-PT Pinlock Suspension, Sold by the Each
NS-A59R030000	Honeywell Peak Orange HDPE Shell Hard Hat, 4-PT Ratchet Suspension, Sold by the Each
NS-A59040000	Honeywell Peak Green HDPE Shell Hard Hat, 4-PT Pinlock Suspension, Sold by the Each
NS-A59R040000	Honeywell Peak Green HDPE Shell Hard Hat, 4-PT Ratchet Suspension, Sold by the Each
NS-A59070000	Honeywell Peak Sky Blue HDPE Shell Hard Hat, 4-PT Pinlock Suspension, Sold by the Each
NS-A59R070000	Honeywell Peak Sky Blue HDPE Shell Hard Hat, 4-PT Ratchet Suspension, Sold by the Each

BSBK-(SIZE)	Black Slush Boots, Sold by the Pair, Sizes 7-17
BSYE-(SIZE)	Yellow Slush Boots, Sold by the Pair, Sizes 7-18
WP10-1P-RD	Red One Piece PVC Rain Poncho, Hood & Side Snaps, Sold by the Each, 50/CS
W335-PP-(SIZE)	35 MIL Heavy Weight PVC/Polyester 3 Piece Yellow Rain Suit, Sold by the Each, SM-7X
WR35-PP-(SIZE)	35 MIL 48" Heavy Weight PVC/Polyester Full Length Yellow Raincoat, Sold by the Each, SM-4X
W310-1P-(SIZE)	10 MIL 3 Piece Yellow Rain Suit, Sold by the Each, SM-3X

PINLOCK SUSPENSION

RATCHET SUSPENSION



NS-BC86010000

NS-BC86070000



NS-A59010000
NS-A59R010000

NS-A59020000
NS-A59R020000

NS-A59030000
NS-A59R030000

NS-A59040000
NS-A59R040000

NS-A59070000
NS-A59R070000



BSBK-(SIZE)



BSYE-(SIZE)



WP10-1P-RD



W335-PP-(SIZE)



WR35-PP-(SIZE)



FIRST AID EYEWASH



K-FAK-10	10 Person Plastic First Aid Kit, Sold by the Each
K-FAK-25-P	25 Person Plastic First Aid Kit, Sold by the Each
K-FAK-50-P	50 Person Plastic First Aid Kit, Sold by the Each
K-FAK-25	25 Person Metal First Aid Kit, Sold by the Each
K-FAK-50	50 Person Metal First Aid Kit, Sold by the Each
K-FAK-100	100 Person Metal First Aid Cabinet, Sold by the Each
K-FAK-3060SZ	All-in-One Blood Borne Pathogen Spill Cleanup Kit, Sold by the Each
K-FAK-21-004	Cold Pack, Sold by the Each, 50/CS
K-FAK-24-000SZ	16 Oz. Wall Mount, Single Bottle Eye Wash Station, Sold by the Each
K-FAK-24-102SZ	16 Oz. Wall Mount, Double Bottle Eye Wash Station, Sold by the Each
K-FAK-24-101	16 Oz. Replacement Eye Wash Bottle Only, Sold by the Each
K-FAK-24-202SZ	32 Oz. Wall Mount, Single Bottle Eye Wash Station, Sold by the Each
K-FAK-24-201	32 Oz. Replacement Eye Wash Bottle Only, Sold by the Each



K-FAK-24-102SZ



K-FAK-24-000SZ

ALL KITS ARE ANSI APPROVED

K-FAK-10



K-FAK-25P



K-FAK-50P



K-FAK-100



K-FAK-3060SZ



K-FAK-10

- (1X) Triangular Bandage
- (1X) Bandage Scissors
- (1X) Forceps
- (10X) Antiseptic Towelettes
- (6X) Burn Cream Packets
- (6X) Triple Antibiotic Packets
- (1X) 2" Gauze Bandage
- (16X) Plastic Adhesive Strips
- (2X) Fabric Fingertip Bandages
- (2X) Fabric Knuckle Bandages
- (4X) 3" X 3" Gauze Pads
- (1X) 1/2" Adhesive Tape
- (4X) Latex Exam Gloves
- (1X) Large Wound Pad
- (1X) First Aid Guide
- (1X) Plastic Case W/ O-Ring

K-FAK-25-P

- (20X) Alcohol Antiseptic Wipes
- (6X) Antiseptic Towelettes
- (3X) Sting Relief Wipes
- (1X) Bandage Scissors
- (1X) Forceps
- (6X) Burn Cream Packets
- (6X) Triple Antibiotic Packets
- (1X) Instant Cold Pack
- (1X) Triangular Bandage
- (32X) Plastic Adhesive Strips
- (2X) Fabric Fingertip Bandages
- (2X) Fabric Knuckle Bandages
- (5X) 3" X 3" Gauze pads
- (1X) 4" Gauze Pad
- (1X) Large Wound Pad
- (1X) 1/2" Adhesive Tape
- (4X) Latex Exam Gloves
- (1X) 1 Fl Oz Eye Wash Solution
- (1X) First Aid Guide
- (1X) Plastic Case W/ O-Ring

K-FAK-50-P

- (20X) Alcohol Antiseptic Wipes
- (15X) Antiseptic Towelettes
- (3X) Sting Relief Wipes
- (4X) PVP Iodine Wipes
- (1X) Bandage Scissors
- (1X) Forceps
- (12X) Burn Cream Packets
- (12X) Triple Antibiotic Packets
- (1X) 2" Elastic Bandage
- (1X) 2" Gauze Bandage
- (1X) 4" Gauze Bandage
- (1X) 1/2" Adhesive Tape
- (10X) Fabric Fingertip Bandages
- (10X) Fabric Knuckle Bandages
- (60X) Plastic Adhesive Strips
- (1X) Instant Cold Pack
- (1X) Triangular Bandages
- (5X) 3" X 3" Gauze Pads
- (4X) Latex Exam Gloves
- (1X) Large Wound Pad
- (1X) First Aid Guide
- (1X) Plastic Case W/ O-Ring

K-FAK-100

- (100X) Alcohol Antiseptic Wipes
- (2X) 5" X 9" Abdominal Pad
- (10X) 4" X 4" Gauze Pads
- (2X) Gauze Bandage
- (2X) 1/2" Adhesive Tape
- (4X) Sterile Eye Pads with Tape Strips
- (4X) Nitrile Exam Gloves
- (10X) Latex Exam Gloves
- (2X) Instant Cold Packs
- (50X) Extra Strength Non-Aspirin Tylenol
- (1X) Bandage Scissors
- (2X) Forceps
- (2X) Triangular Bandages
- (200X) 1" X 3" Plastic Adhesive Strips
- (15X) 2" X 3" Extra Large Bandages
- (15X) Knuckle Bandages
- (15X) Fingertip Bandages
- (10X) Sting Relief Wipes
- (25X) Burn Cream Packets
- (1X) 4 Fl Oz Eye Wash Solution
- (1X) 4 Fl Oz Burn Spray
- (1X) 2" Elastic Bandage
- (1X) 4" Elastic Bandage
- (1X) First Aid Guide
- (1X) Metal Cabinet

K-FAK-3060SZ

- (1X) Absorbant Spill Powder
- (1X) Red Biohazard Bag
- (1X) Clear Poly Bag
- (2X) Bag Ties
- (1X) Pair of Nitrile Gloves
- (10X) Paper Towels
- (1X) Germicidal Wipe
- (2X) Anti-Spetic Towelettes
- (1X) Spatula and Scoop
- (1X) Plastic Case W/ O-Ring



MISC. PRODUCTS

WHOLESALE LINES

D-100	Wall Mount Wire Rack for 50 & 100 Pack Disposable Gloves, Sold by the Each
D-100PE	Wall Mount Wire Rack for 100 Pack Polyethylene Gloves, Sold by the Each
D-100DAP	Wall Mount Wire Rack for DAP10 Aprons, Sold by the Each
D-200	Wall Mount Wire Rack for GDSH & GDCP Pack Disposable Gloves, Sold by the Each
D-200V	Wall Mount Wire Rack for 2 boxes, 50 & 100 Pack Disposable Gloves, Sold by the Each
D-400	Wall Mount Wire Rack for 4 boxes, 50 & 100 Pack Disposable Gloves, Sold by the Each
D-TSC-250E	White Toilet Seat Dispenser Holder, 30/CS
PW-18-4R80-H	18" Wide Hand Pallet Wrap, 1500Ft/Roll 4Rolls/CS
GNBJ-18-2R	18" Neoprene Fryer Glove, Sold by the Pair
Z-BACKSUP-(SIZE)	Back Support, Detachable Suspenders, XS-4X
TSC-250E	Standard Paper Toilet Seat Covers, 250BX 20BX/CS
TRASH CAN LINERS	We Stock Many Sizes And Thicknesses of High & Low Density Liners. (Please Call For Sizes And Pricing)



Honeywell

uvex
(EYE PROTECTION)

HOWARD LEIGHT
(HEARING PROTECTION)

fend-all
(EYE WASH STATIONS)

NORTH
Safety Products

MILLER
Fall Protection

DUPONT Tyvek
(DISPOSABLE APPAREL)

MOLDEX
(HEARING & RESPIRATORY PROTECTION)

JUSTRITE
(SAFETY CANS & CABINETS)

SQUINCHER
(ELECTROLYTE DRINKS)

CREWS INC.
(EYE PROTECTION)

BAUSCH & LOMB
(LENS CLEANING STATIONS)



Suggested	Green
Limited Use	Yellow
Inadequate	Red
Not rated	Black

Chemical Resistance Chart

This chemical chart is for reference use only. We recommend on-site testing of all gloves and provide free samples to determine safe usage.



	Latex	Nitrile	Vinyl		Latex	Nitrile	Vinyl
Acetaldehyde, 99.5%	Green	Yellow	Red	Hydrochloric Acid, 38%	Green	Green	Green
Acetic Acid	Green	Green	Green	Hydrofluoric Acid, 48%	Green	Green	Green
Acetone, 99.5%	Green	Red	Red	Hydrogen Peroxide, 30%	Green	Green	Green
Acetonitrile, 99%	Green	Green	Red	Hydroquinone	Green	Green	Green
Acrylic Acid, 99%	Green	Yellow	Black	Hypophosphorus Acid, 50%	Yellow	Red	Red
Acrylonitrile	Green	Green	Yellow	Iodine	Green	Green	Green
Ammonium Fluoride, 40%	Green	Green	Green	Isobutyl Alcohol, 99%	Green	Green	Green
Ammonium Hydroxide, 85%	Green	Red	Green	Iso-Octane, 99%	Yellow	Green	Red
Amyl Acetate, 100%	Red	Green	Yellow	Isopropanol	Black	Green	Black
Amyl Alcohol, 99%	Green	Green	Yellow	Isopropyl Alcohol, 99%	Yellow	Green	Green
Aniline, 99%	Green	Green	Yellow	Isopropyl Benzene	Black	Green	Black
Animal Fats	Red	Green	Green	Kerosene, 100%	Green	Green	Red
Aqua Regia	Red	Green	Green	Lactic Acid, 85%	Green	Green	Yellow
Battery Acid	Green	Green	Green	Lauric Acid, 36%	Green	Green	Green
Benzaldehyde, 99.5%	Yellow	Red	Red	Linoleic Acid	Red	Green	Green
Benzene	Red	Green	Yellow	Linseed Oil	Red	Green	Green
Benzyl Chloride	Yellow	Green	Red	Maleic Acid, 100%	Green	Green	Green
Bromine	Green	Black	Green	Methanol	Black	Green	Black
Bromopropionic Acid, Sat	Green	Green	Black	Methyl Acetate	Red	Red	Black
Butane	Red	Green	Red	Methyl Alcohol, 99.9%	Green	Green	Green
2-Butoxyethanol	Black	Green	Black	Methylamine, 40%	Green	Green	Green
Butyl Acetate, 99%	Red	Yellow	Red	Methyl-Butyl Ether, 99.8%	Red	Green	Black
Butyl Alcohol, 99%	Green	Green	Green	Methyl Cellosolve, 99%	Yellow	Yellow	Red
Butyl Cellosolve, 99%	Green	Green	Red	Methylamine	Green	Green	Green
Butyrolactone, 99%	Green	Red	Black	Methyl Chloride	Red	Red	Red
Calcium Hypochlorite	Red	Green	Green	Methylene Chloride	Yellow	Green	Yellow
Carbolic Acid	Red	Red	Green	Methyl Ethyl Ketone, 99%	Yellow	Red	Red
Carbon Dichloride	Black	Green	Green	Methyl Isobutyl Ketone	Red	Red	Black
Carbon Disulfide, 99.9%	Red	Yellow	Red	Methyl Methacrylate	Red	Red	Black
Carbon Tetrachloride, 99%	Red	Green	Yellow	Methyl-T-Butyl Ether	Black	Green	Black
Castor Oil	Green	Green	Green	Mineral Oil	Red	Green	Yellow
Cellosolve Acetate, 99%	Green	Green	Red	Mineral Spirits, 100%	Red	Green	Red
Cellosolve Solvent	Green	Green	Black	Monoethanolamine, 99%	Yellow	Green	Green
Chlorine	Green	Green	Green	Morpholine, 99%	Yellow	Red	Yellow
Chloroacetone	Yellow	Black	Red	Muriatic Acid, 100%	Green	Green	Green
Chlorobenzene	Green	Green	Yellow	Naphtha VM&P, 100%	Red	Red	Red
Chloroform	Red	Green	Red	N-Methyl-2 Pyrrolidone, 99%	Yellow	Red	Black
Chloronaphthalenes	Black	Yellow	Black	Naphthalene	Green	Green	Green
Chlorothene VG	Black	Yellow	Red	Nitric Acid, 10%	Green	Green	Green
Chromic Acid, 50%	Red	Yellow	Green	Nitric Acid, 70%	Red	Red	Yellow
Citric Acid, 10%	Green	Green	Green	Nitrobenzene, 99%	Yellow	Red	Red
Cottonseed Oil	Red	Green	Green	Nitromethane, 95.5%	Green	Red	Black
Creosol	Red	Green	Yellow	Nitropropane, 95.5%	Green	Red	Black
Cunene	Black	Green	Black	Octyl Alcohol, 99%	Green	Green	Green
Cutting Oil	Yellow	Green	Red	Oleic Acid, 99%	Green	Green	Green
Cyclohexane	Red	Green	Red	Oxalic Acid, 12.5%	Green	Green	Green
Cyclohexanol, 98%	Green	Green	Yellow	Paint Remover	Yellow	Green	Red
Diacetone Alcohol, 99%	Yellow	Green	Red	Palmitic Acid, Sat.	Green	Green	Green
Dibutyl Phthalate, 99%	Yellow	Green	Red	Pentachlorophenol, 35%	Red	Green	Black
Diamine	Black	Green	Black	Pentane, 98%	Red	Green	Green
Diethylamine, 99%	Red	Yellow	Red	Perchloric Acid, 60%	Black	Green	Black
Diethyl Ether	Yellow	Green	Red	Perchloroethylene	Black	Green	Black
Di-Isobutyl Ketone, 80%	Yellow	Green	Green	Perfluoreum Ether	Black	Green	Black
Dimethyl Acetamide, 99%	Yellow	Red	Black	Phenol, 90%	Green	Red	Green
N,N-Dimethyl Formamide, 99%	Green	Red	Red	Phosphoric Acid, 85%	Green	Green	Green
Dimethyl Sulfoxide, 99%	Green	Green	Black	Picric Acid	Green	Green	Green
Diocetyl Phthalate, 99%	Yellow	Green	Black	Potassium Hydroxide, 50%	Green	Green	Green
1,4-Dioxane, 99.9%	Yellow	Red	Yellow	Printing Ink	Green	Green	Yellow
Epichlorohydrin, 99%	Black	Red	Black	Propyl Acetate, 99%	Red	Yellow	Red
Ethanol	Black	Green	Black	Propyl Alcohol, 96%	Green	Green	Yellow
2-Ethoxyethanol	Black	Green	Black	Propylene Oxide	Red	Black	Black
Ethyl Acetate, 99%	Yellow	Red	Red	Pyridine, 99%	Yellow	Red	Red
Ethyl Alcohol, 90%	Green	Green	Yellow	Rubber Solvent, 100%	Red	Red	Red
Ethyl Ether, 99%	Yellow	Green	Green	Rule Solvent	Black	Green	Black
Ethylene Dichloride	Red	Green	Red	Sodium Hydroxide, 50%	Green	Green	Green
Ethylene Glycol, 99%	Green	Green	Green	Sodium Hypochlorite	Green	Yellow	Green
Ethyl Glycol Ether, 99%	Yellow	Yellow	Black	Stoddard Solvent, 99%	Red	Red	Green
Ethylene Trichloride	Red	Red	Black	Styrene	Green	Yellow	Green
Fluorine	Green	Black	Green	Sulfuric Acid, 95%	Green	Green	Green
Formaldehyde, 99%	Green	Green	Green	Tannic Acid, 37.5%	Green	Green	Green
Formalin Solution	Black	Green	Black	1,1,1,2-Tetrachloroethane, 99%	Red	Red	Black
Formic Acid, 95%	Green	Yellow	Green	Tetrachloroethylene, 100%	Red	Red	Green
Freon TF, 99%	Red	Yellow	Yellow	Toluene, 99%	Red	Red	Yellow
Furfural, 99%	Green	Red	Red	Toluene Di-Isocyanate	Red	Black	Red
Gasoline, 100%	Red	Green	Yellow	1,1,1-Trichloroethane, 99%	Red	Red	Black
Glutaraldehyde, 25%	Red	Green	Yellow	Trichloroethylene	Red	Green	Yellow
Glycerine	Green	Green	Green	Tricresyl Phosphate, 90%	Red	Green	Yellow
Glycerol	Green	Green	Green	Triethanolamine, 85%	Yellow	Green	Green
Heptane	Black	Green	Black	Tung Oil	Black	Green	Yellow
Hexamethyldisilazine, 97%	Black	Green	Black	Turbine Oil	Red	Green	Yellow
Hexane, 99%	Red	Green	Red	Turpentine, 100%	Red	Green	Red
Hydraulic Fluid-Petrol Based	Red	Red	Green	Vegetable Oil	Red	Green	Yellow
Hydraulic Fluid-Ester Based	Red	Red	Red	Vinyl Acetate	Red	Yellow	Red
Hydrazine, 65%	Red	Green	Green	Xylene	Red	Yellow	Red

Established in 1973, The Safety Zone sells through authorized distribution only and never direct to end users.



- WORLDWIDE HEADQUARTERS
Guilford, CT
- DISTRIBUTION CENTERS
Richmond, IN
Cerritos, CA
Houston, TX
Pompano Beach, FL
Kent, WA
Thomasville, NC
Secaucus, NJ
Fergus, ON Canada



THE SAFETY ZONE, LLC

385 Long Hill Road | PO Box 449 | Guilford, CT 06437

t: 800.821.5702 | f: 800.783.2987 | safetyzone.com



the SAFETY
ZONE®